



**TESTIMONY BY THE ASIAN AMERICAN INSTITUTE  
BEFORE THE ILLINOIS HOUSE REDISTRICTING COMMITTEE  
MAY 22, 2011**

Submitted By:

Ami Gandhi, Esq., Legal Director, Asian American Institute  
4753 North Broadway Street, Suite 502, Chicago, Illinois 60640  
Phone: (773) 271-0899 x 222, E-mail: [ami@aaichicago.org](mailto:ami@aaichicago.org)

The Asian American community has actively participated in redistricting hearings and meetings with legislators for years, in order to give thoughtful and essential input, so that our community does not suffer from the devastating harm that we have suffered previously because of redistricting in Illinois.

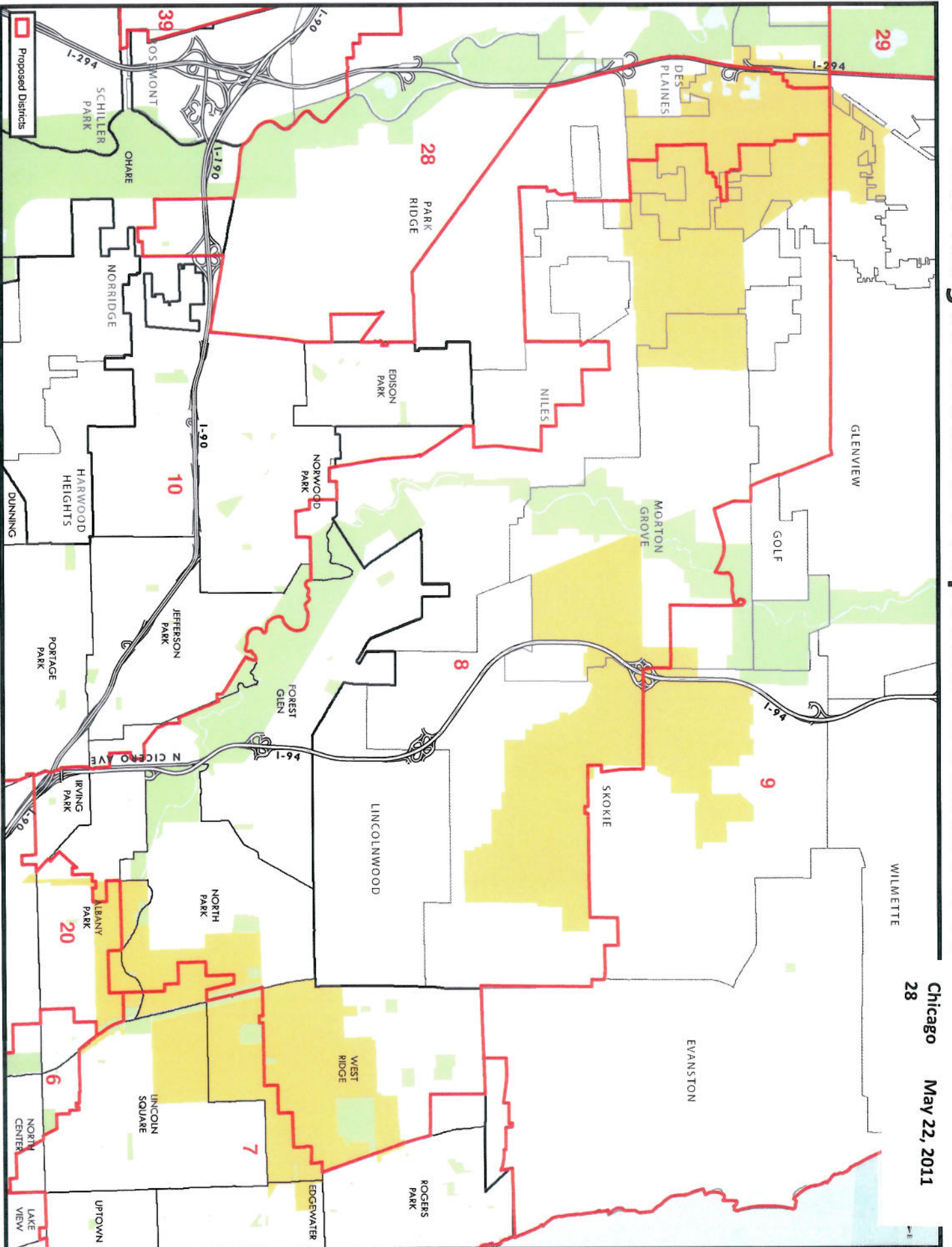
Asian American Institute has partnered with many community-based organizations and community leaders to define our neighborhood boundaries on the north side of Chicago and nearby suburbs. We have provided district map proposals through our coalition work with United Congress of Community and Religious Organizations, to show that it is possible to drawing strong Asian American influence districts (including a Senate district with over 25% Asians and two House districts with over 25% Asians each) and also cause little or no fragmentation of Asian American neighborhoods, as defined by the people who live there. We have submitted numerous testimonies and demographic analyses, detailing the characteristics and socioeconomic concerns of our community, and these are available on our website at [aaichicago.org](http://aaichicago.org).

We are encouraged that the recent proposals draw Senate District 8 to have 23% Asian Americans and House Districts 15 and 16 to have 20% and 25% Asian Americans, respectively. However, we were dismayed to see that the maps proposed by the Senate and House cause the Asian American community in the current Senate Districts 8, 9, and 28 to become further fragmented into Senate Districts 7, 8, 9, and 10, with portions also in additional districts. Similarly, the Asian American community in the current House Districts 15, 16, 17, and 57 is becoming further fragmented into House Districts 13, 15, 16, 17, and 20, with portions also in additional districts. This further fragmentation of our community will dilute the Asian American vote.

We urge the House Redistricting Committee and the entire Illinois General Assembly to take another careful look at the fragmentation of our communities as seen on the attached maps. We request you to be mindful of Asian Americans' legal right to have votes that count. We ask you to revise the map so that our communities are in fewer Senate and House districts while also drawing at least one Senate district and two House districts on the north side to be at least 25% Asian American. We stand in solidarity with other minority communities whose voting rights must also be protected during this redistricting cycle. Thank you.

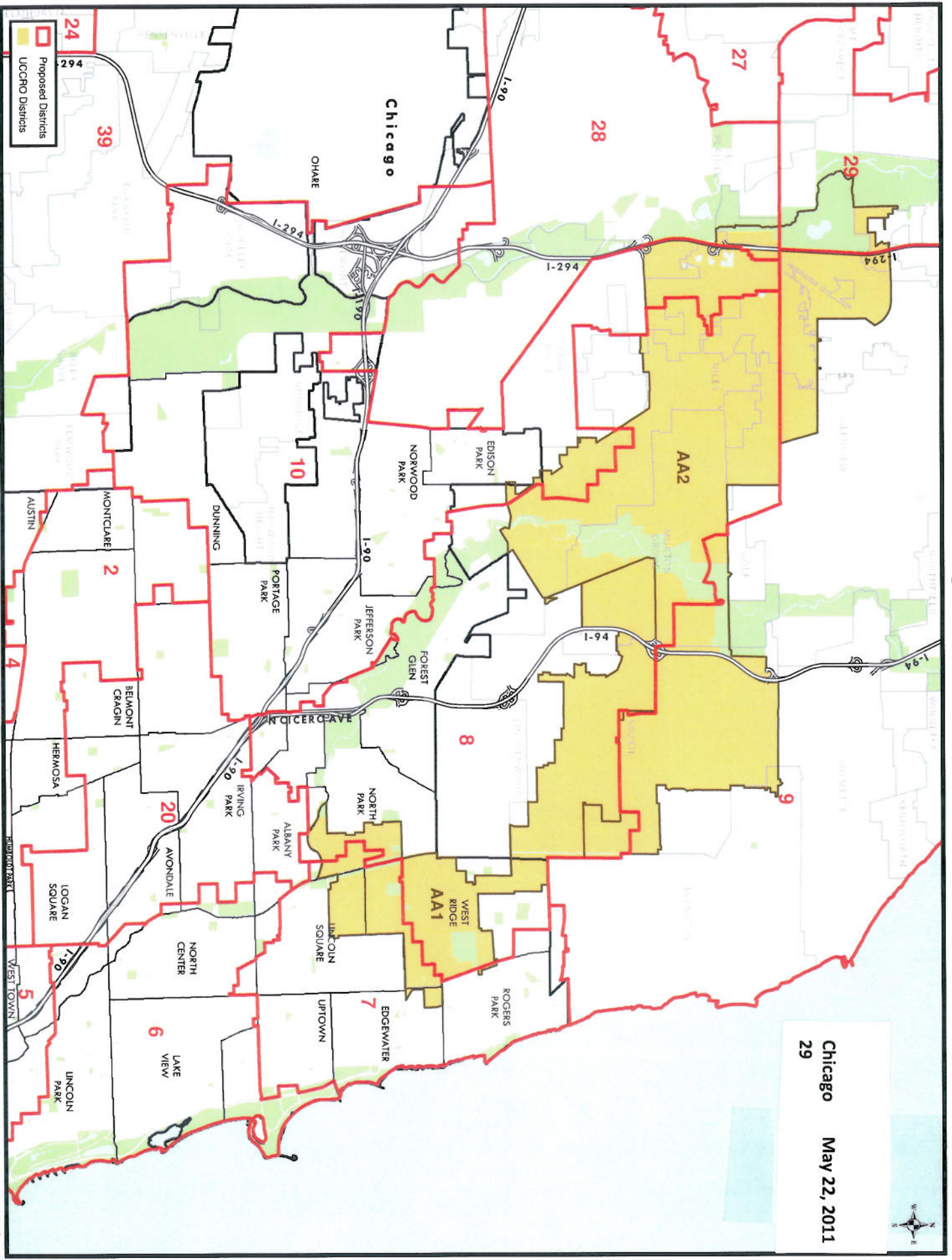
# AAI Target Areas & Proposed IL Senate Bou

Chicago 28  
May 22, 2011



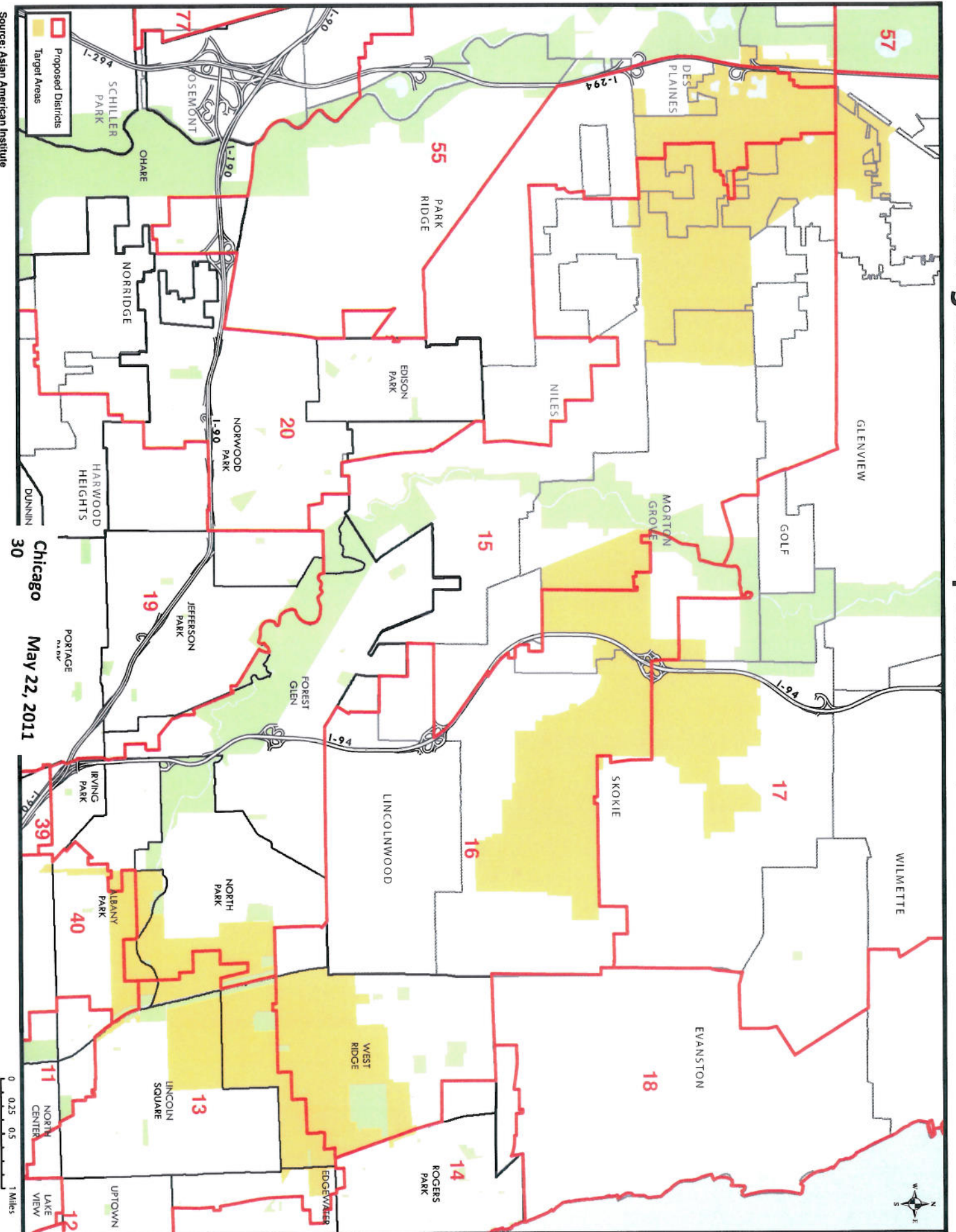
# UCCRO Districts & Proposed IL Senate Boundaries

Chicago  
29  
May 22, 2011



Source: Asian American Institute

# AAI Target Areas & Proposed IL House Boundaries



Source: Asian American Institute

